



Bring Your ideas
Into Reality

Transparent LED Display

STJ Series Design (10/20/25/30/40/50/60/100)

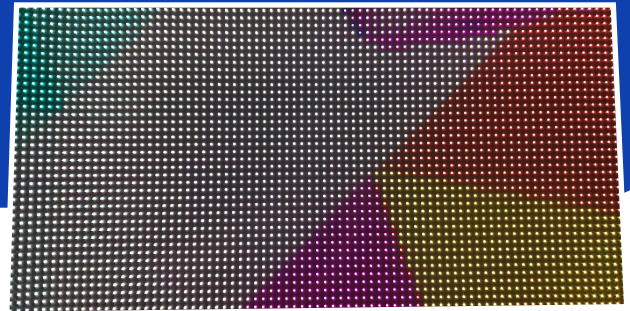
- High Transparency
- Invisible PCB Technology

STJ Series Design

In the booming glass LED screen industry, the transparency is the most important factor for windows, this is why most of manufacturers try to make the highest transparency, Milestrong invisible PCB technology came out after many years development, this new technology not only expand the transparency rate up to 95%, but also can be made for any custom projects with soft PCB technology, you can also cut the size of film as you wanted easily.

The STJ Series means the PCB board is also transparent, it is hard to find wires in the PCB even if you get closer and check it carefully, the traditional PCB of glass LED screen can not made like this. This is why when the film LED screen is off, you cannot see anything on the window glass.

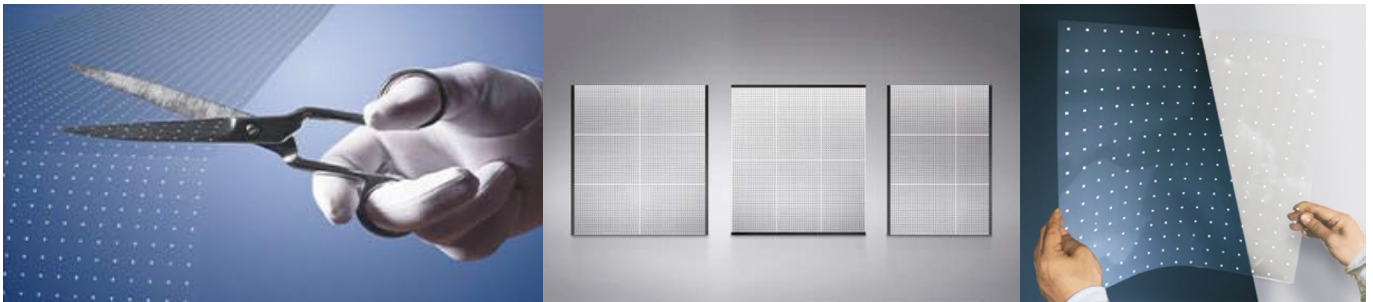
The transparency is 95% or more. The STJ Series is also soft and 1.2mm thickness, you can make any shapes and size with any limitation, and applied most of your projects.



STJ Series Features

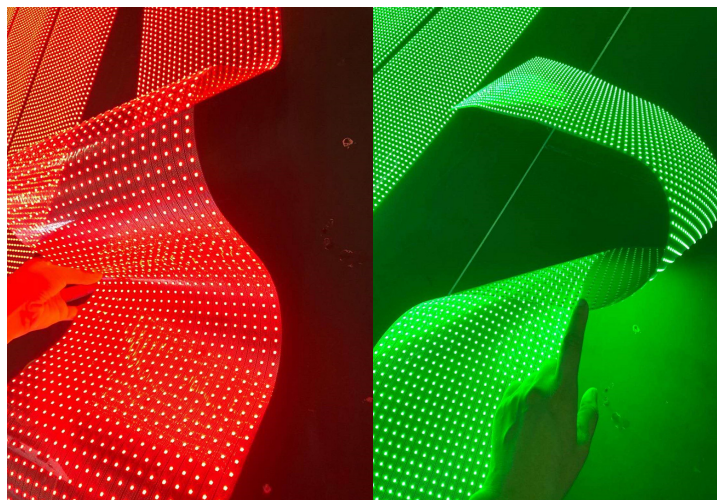
Super Scalability and Flexibility

It can be freely cut and seamless stitching, and screen sizes and shapes can be flexibly matched to a variety of mounting area carriers, such as triangular and ovals.



High Transparency

High transparency (95%) allows glass to be visible even after film sticking, without adverse effects on the original design.



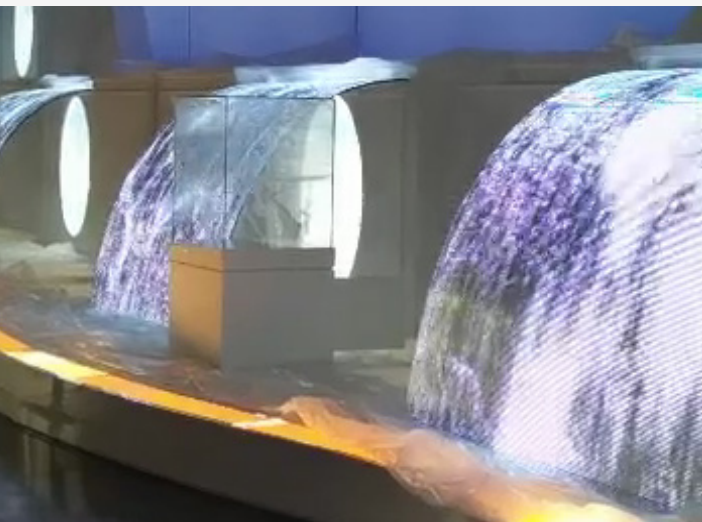
95% transparent PCB

Invisible PCB Technology

Thanks to the invisible PCB advanced technology, the transparency rating of film is up to 95%, you even can not see the PCB wires inside of film, when the film LED screen is turned off, it is same like a window glass.

Vivid See-Through Experience

The transparent film ensures that the directed light passes through the windows, and viewers feel like time travel to the future with high see-through experience.



Easy Installation

Paste on glass directly without any installation frame, and never break the original design on site.

Super Curve Format

LED transparent film supports curved glass or window applications with curvature up to 1100R convex and concave, which allows the wider site to be redesigned as a landmark.



Slim and Light Weight

The thickness is only 1.2mm, Each 500*500mm Weighs 0.3kgs, the lightest LED display in the world.



Cut the Size As You Want

You can cut the size of film for your projects on site, no need custom made size.

Specification

Product Model	STJ 10	STJ 20	STJ 25	STJ 30	STJ 40	STJ 50	STJ 60	STJ 100
Pixel Pitch	10	20	25	30	40	50	60	100
Module Size (mm)	960x320	960x320	1000x400	960x480	960x480	1000x400	960x480	1000x500
Weight (Kg)	1~3	1~3	1~3	1~3	1~3	1~3	1~3	1~3
Thickness (mm)	≤1.5	≤1.5	≤1.5	≤1.5	≤1.5	≤1.5	≤1.5	≤1.5
Brightness	≤5000	≤4500	≤3500	≤3000	≤2000	≤2000	≤1500	≤800
Viewing angle (W/H)	160	160	160	160	160	160	160	160
LED Configuration	1R1G1B	1R1G1B	1R1G1B	1R1G1B	1R1G1B	1R1G1B	1R1G1B	1R1G1B
Refresh Rate	≥1920	≥1920	≥1920	≥1920	≥1920	≥1920	≥1920	≥1080
Avg Consumption (W/m ²)	≤150	≤150	≤100	≤100	≤100	≤80	≤80	≤80
Max Consumption (W/m ²)	≤600	≤600	≤400	≤400	≤400	≤300	≤300	≤300
Working Temperature (°C)	-10°C~45°C	-10°C~45°C	-10°C~45°C	-10°C~45°C	-10°C~45°C	-10°C~45°C	-10°C~45°C	-10°C~45°C
Working Humidity(%)	10%~90%	10%~90%	10%~90%	10%~90%	10%~90%	10%~90%	10%~90%	10%~90%